

**NOTE: Please read this document before install the compactor body**

## 8m<sup>3</sup> Garbage Compactor Truck Spare Parts List

NO.	Item	Name	Coad	Quantity	Comments
1	Compactor tank	Tank Assembly	YS8-0100000	1	
2		Tail Gate Assembly	YS8-0200000	1 set	
3		Scraper Assembly	YS8-0300000	1 set	
4		Slide Plate Assembly	YS8-0400000	1 set	
5		Tilt Device Assembly	YS8-0500001	1 set	
6	Spare Parts	Oil Pump		1 unit	
7		Five Function Multi-way Valve		1 set	Installed
8		Hydraulic Oil Tank	80L	1 unit	Installed
9		PLC Control Box		1 set	Installed
10		Electric System		1 set	Installed
11		Balance Valve	5060BF2	2 units	Installed
12		Hosepipe, oil pipe & Joint		1 set	Installed
13		Slide Plate Oil Cylinder	50/90-1300x830	2 units	Installed
14		Scraper Oil Cylinder	50/80-860x570	2 units	Installed
15		Lifting Oil Cylinder	50/80-840x560	2 units	Installed
16		Tilt Device Oil Cylinder	45/80-410x170	2 units	Installed
17		Push Pate Oil Cylinder	55/125-1220x2600	1 unit	Installed
18		Sliding Block	Nylon	1 set	Installed
19		Hose Protector		1 set	Installed
20		Ball Valve	1' 1/4	1 unit	Installed
21		Steel Cover		1 unit	Installed
22		Side lamps		1 set	Installed
23		Others	Cushion		2 units
24	U-style Bolt			8 units	
25	Waste Water Tank Assembly (With Support)			1 unit	
26	Standard Part			1 set	

## Number 1-5 Compactor tank

### 1. Tank Assembly:



### 2. Tail Gate Assembly



**Tail Gate Assembly**



### 3. Scraper Assembly

Scraper Assembly



### 4. Slide Plate Assembly

Slide Plate Assembly



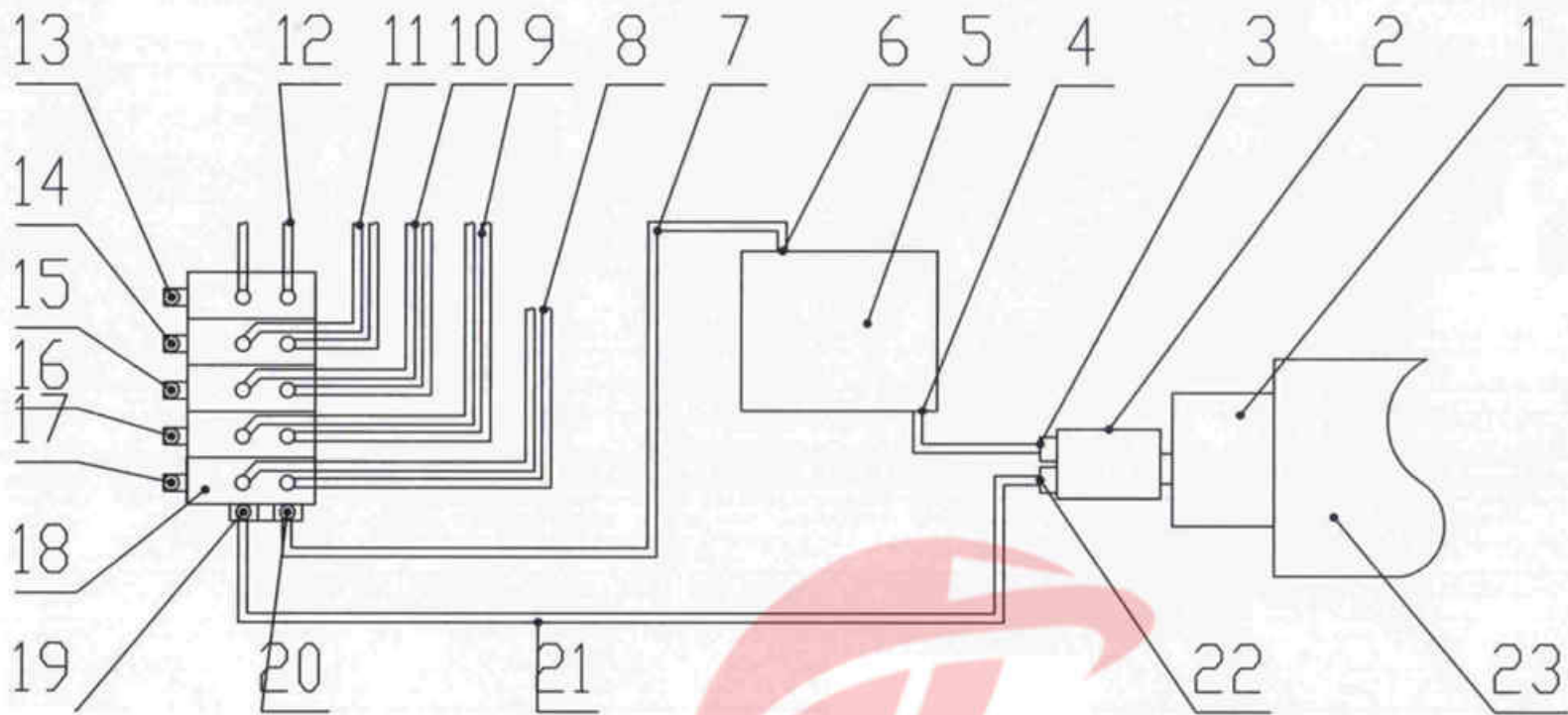
Whatsapp: +86 136 4729 9000  
+86 159 7192 0800

### 5. Tilt Device Assembly

Tilt Device Assembly



Number 6-22 Spare Parts



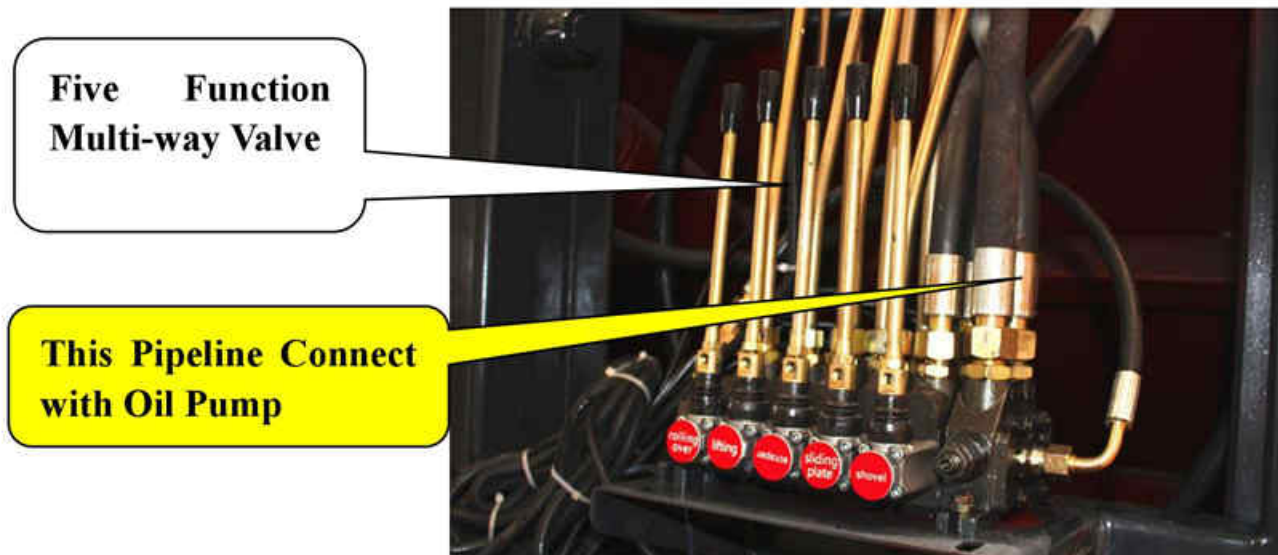
- |                                   |                              |                          |                                    |                     |
|-----------------------------------|------------------------------|--------------------------|------------------------------------|---------------------|
| 1, PTO                            | 8, Push Plate Oil Cylinder   | 13, Joystick for Item 12 | 18, Multi-way Valve                | 23, Chassis Gearbox |
| 2, Oil Pump                       | 9, Slide Plate Oil Cylinder  | 14, Joystick for Item 11 | 19, Oil Inlet for Multi-way Valve  |                     |
| 3, Inlet Pipe for Oil Pump        | 10, Scraper Oil Cylinder     | 15, Joystick for Item 10 | 20, Oil Outlet for Multi-way Valve |                     |
| 4, Outlet pipe for Oil Tank       | 11, Tail Gate Oil Cylinder   | 16, Joystick for Item 9  | 21, Oil Pipeline                   |                     |
| 5, Hydraulic Oil Tank             | 12, Tilt Device Oil Cylinder | 17, Joystick for Item 8  | 22, Oil Inlet for Oil Pump         |                     |
| 6, Inlet Pipe for Multi-way Valve |                              |                          |                                    |                     |
| 7, Oil Pipeline                   |                              |                          |                                    |                     |

(Hydraulic System Drawing)

Whatsapp: +86 136 4729 9000  
+86 159 7192 0800

6. Oil Pump

7. Five Function Multi-way Valve





## 8. Hydraulic Oil Tank

Hydraulic Oil Tank

This Pipeline Connect with Oil Pump



Multi-way Valve Pipeline

Hydraulic Oil Tank Pipeline

Oil Pump



## 9. PLC Control Box

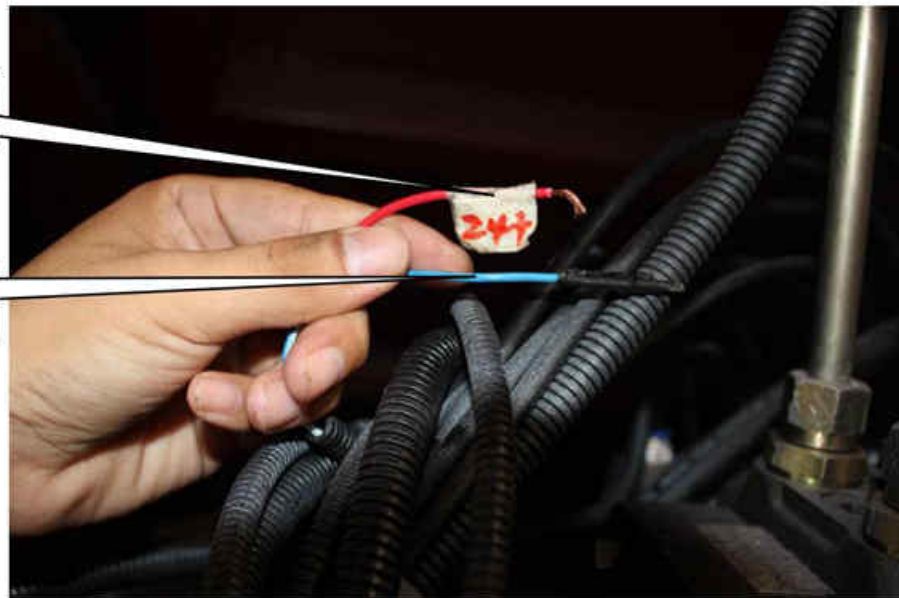
PLC Control Box (Install in Cab)



## 10. Electric System

Positive Pole **RED**

Positive Pole **BLUE**



The side light system has been well installed; please connect with Tail Light to work



## 11. Balance Valve

Whatsapp: +86 136 4729 9000  
+86 159 7192 0800

Balance Valve for safety working



## 12. Hosepipe, oil pipe & Joint



13. Slide Plate Oil Cylinder

Slide Plate Oil Cylinder



Slide Plate Oil Cylinder

14. Scraper Oil Cylinder

Scraper Oil Cylinder



Scraper Oil Cylinder

15. Lifting Oil Cylinder

Lifting Oil Cylinder



16. Tilt Device Oil Cylinder



17. Push Plate Oil Cylinder



Whatsapp: +86 136 4729 9000  
+86 159 7192 0800

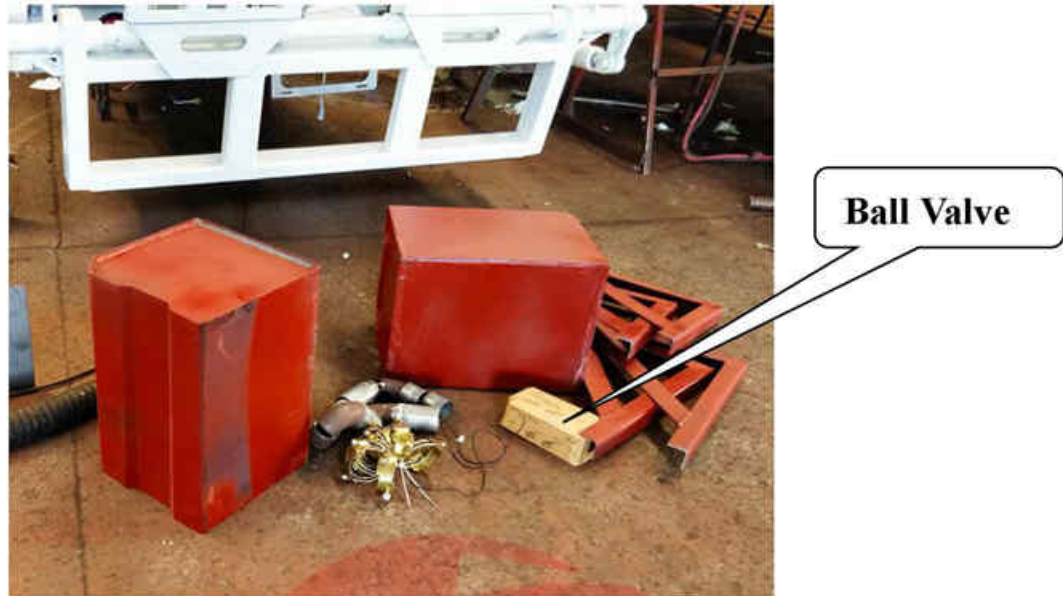
18. Sliding Block





19. Hose Protector

20. Ball Valve



21. Steel Cover



Whatsapp: +86 136 4729 9000  
+86 159 7192 0800

22. Side lamps



Number 23-26 Others

23. Cushion

Cushion



Cushion installed in this place  
(Between the Auxiliary Frame  
& Chassis Frame)

24. U-style Bolt

Whatsapp: +86 136 4729 9000  
+86 159 7192 0800

U-style Bolt and Spacer

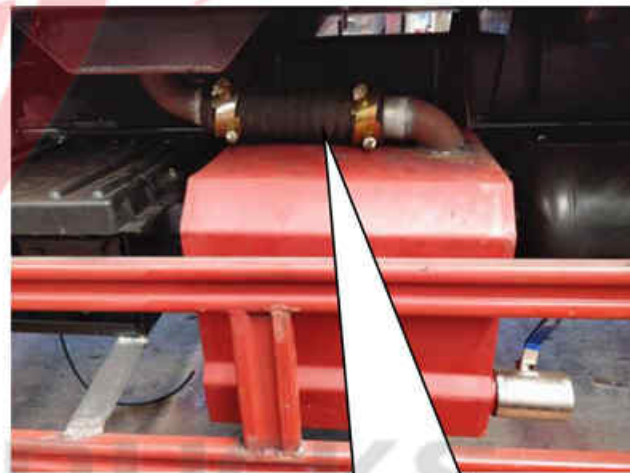




25. Waste Water Tank Assembly (With Support)



Waste Water Tank Assembly should be installed this position, Left & Right both ok



Waste Water Tank Assembly well installed should be installed like this

26. Standard Part

**Read the following guidance to install the Garbage Compactor:**

**Steps 1:**

**Dragging out the garbage compactor superstructure by forklift; then cut the support wheel.**

**Use Forklift dragging out the garbage compactor superstructure**



**Cut off the support wheel, and ready for installation**

Whatsapp: +86 136 4729 9000  
+86 159 7192 0800

**Steps 2:**

**Fix the Garbage Compactor on the Chassis: Use U-style bolt to connect chassis frame and auxiliary frame.**

**Auxiliary Frame**

**Cushion**

**U-style bolt**

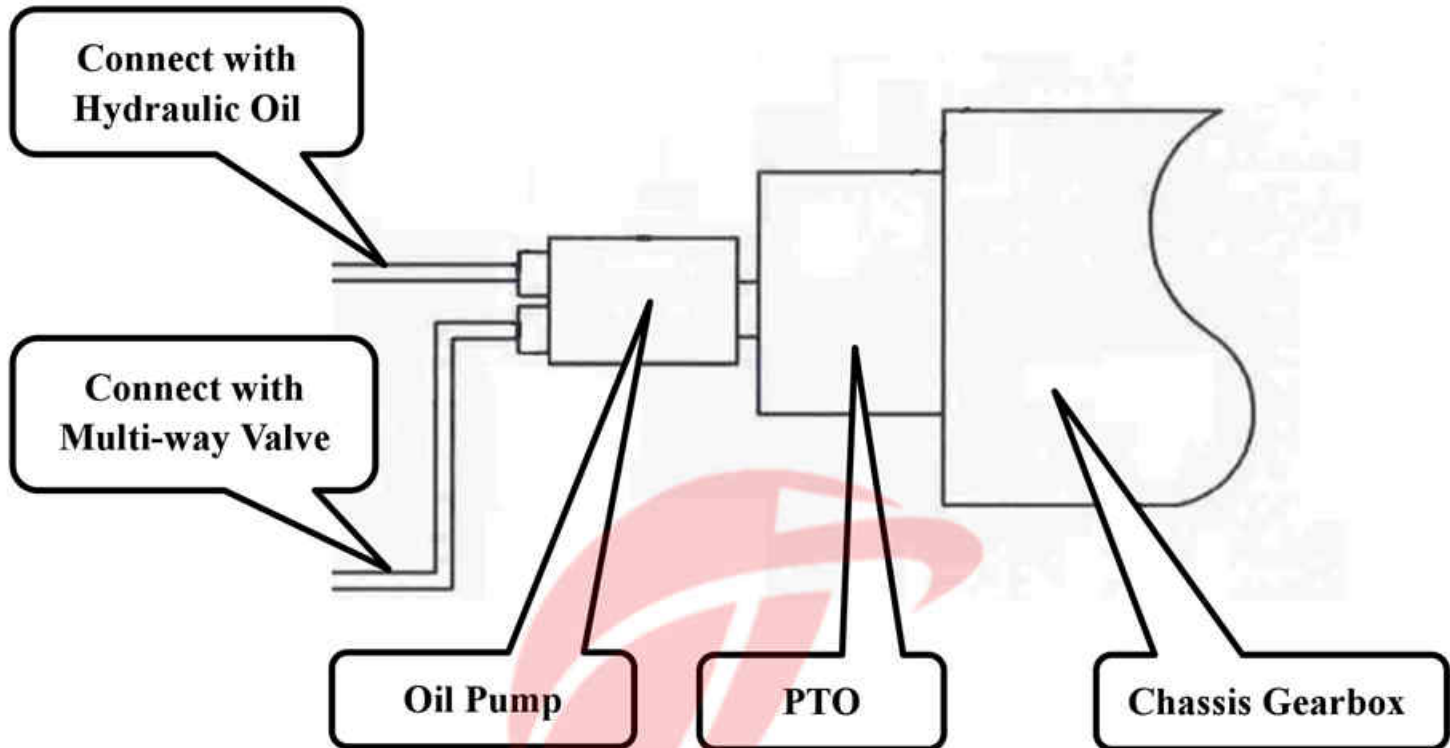
**Chassis Frame**





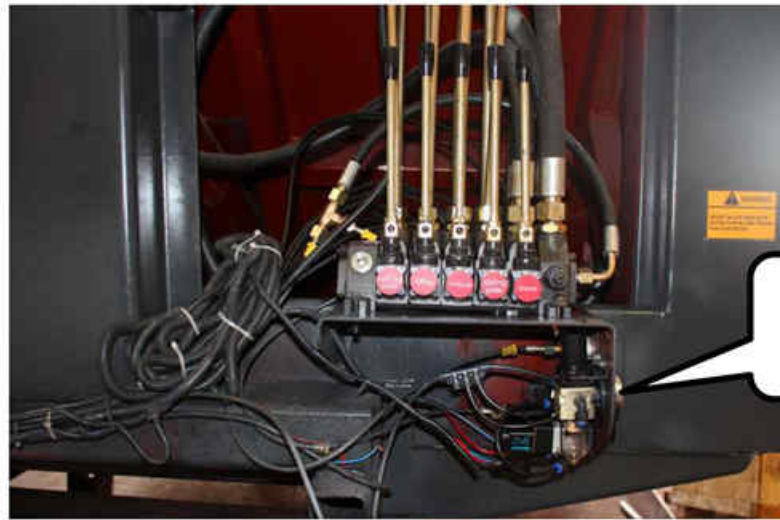
Steps 3:

Install the PTO & Oil Pump on Chassis Gearbox; then connect the Garbage Compactor and the Chassis by using oil pipeline.

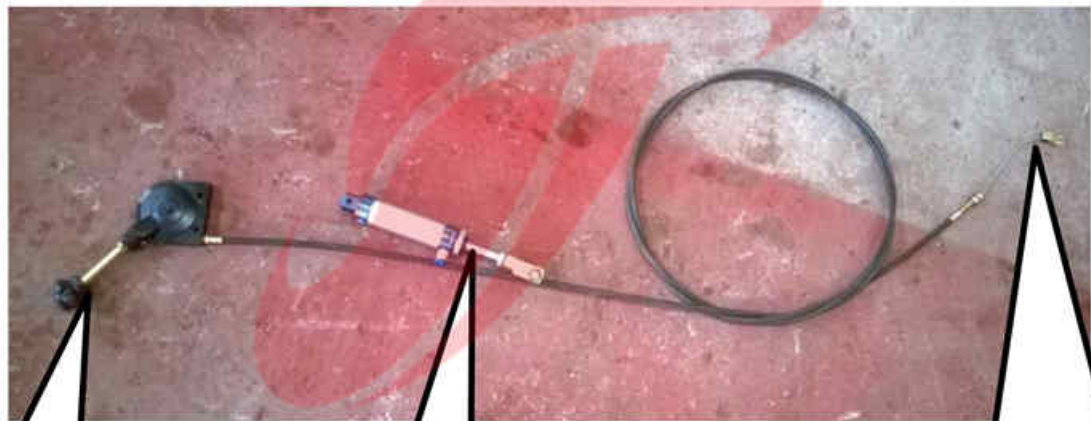


Steps 4:

Connect the Gas Cylinder and Hand Cable Accelerator.



All parts well been installed



Hand Cable Accelerator

Gas Cylinder

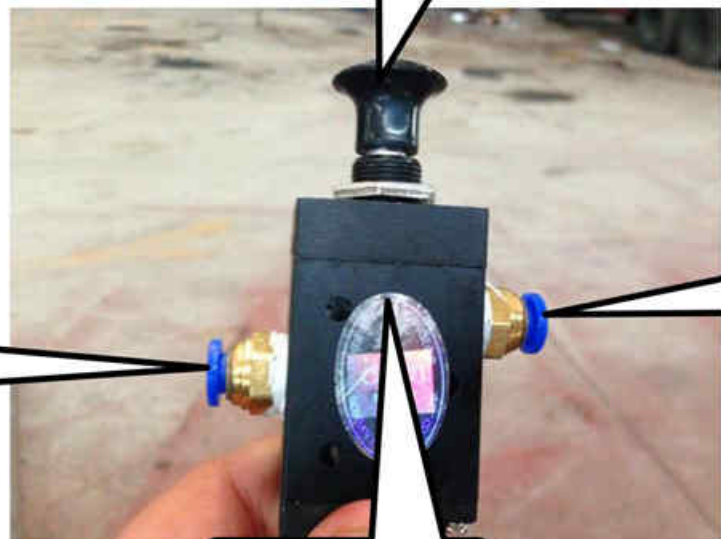
Connect the Accelerator Pedal

Steps 5:

Connect the PTO Switch

Whatsapp: +86 136 4729 9000  
+86 159 7192 0800

Push: Turn Off  
Pull: Turn On



Multi-way Valve Pipeline

Connect with Gas Tank

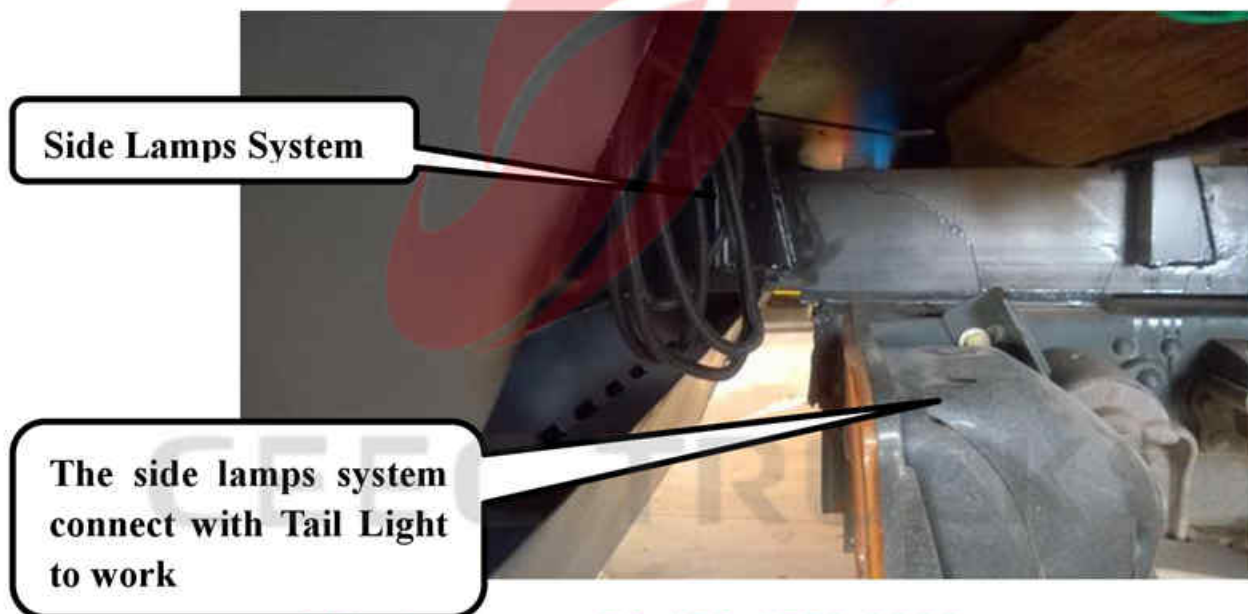
PTO Switch





Steps 6:

**Connect the Side Lamp to work:**



Whatsapp: +86 136 4729 9000  
+86 159 7192 0800

**Kindly keep us informed if need any help during installation!**